

Wythburn Place, London. W1H

£650 pw | £2,817 pcm Subject To Contract (fees apply)



A delightful 2 bedroom mews house, situated in a quiet cobbled street, close to Marble Arch and Hyde Park with excellent food shopping just a few minutes walk away.

Open plan kitchen/living/dining

2 double bedrooms

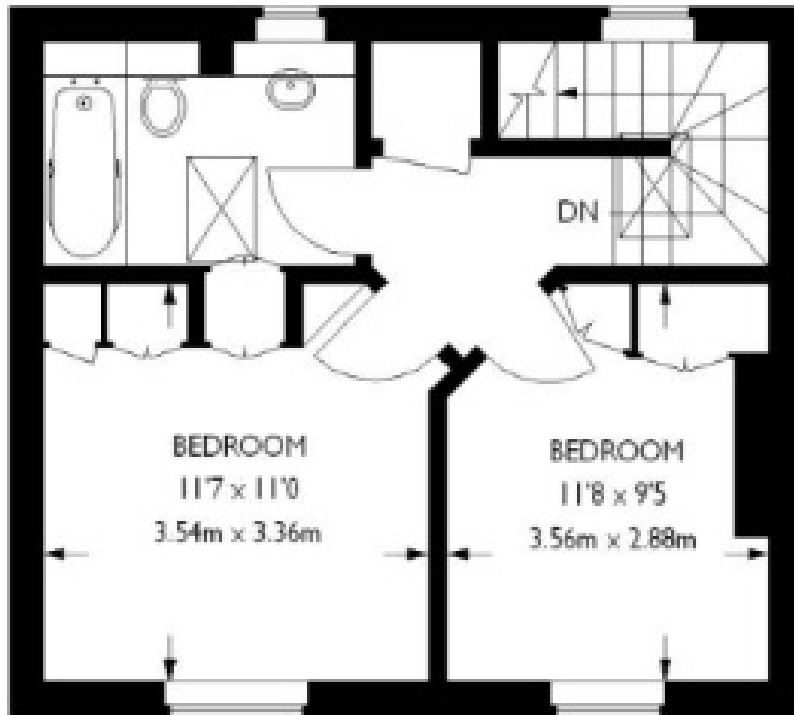
1 bathroom

McGlashans Property Services
107 Crawford Street . London . W1H 2JA
TEL: 020 7486 6711 . E: lettings@mcglashans.co.uk

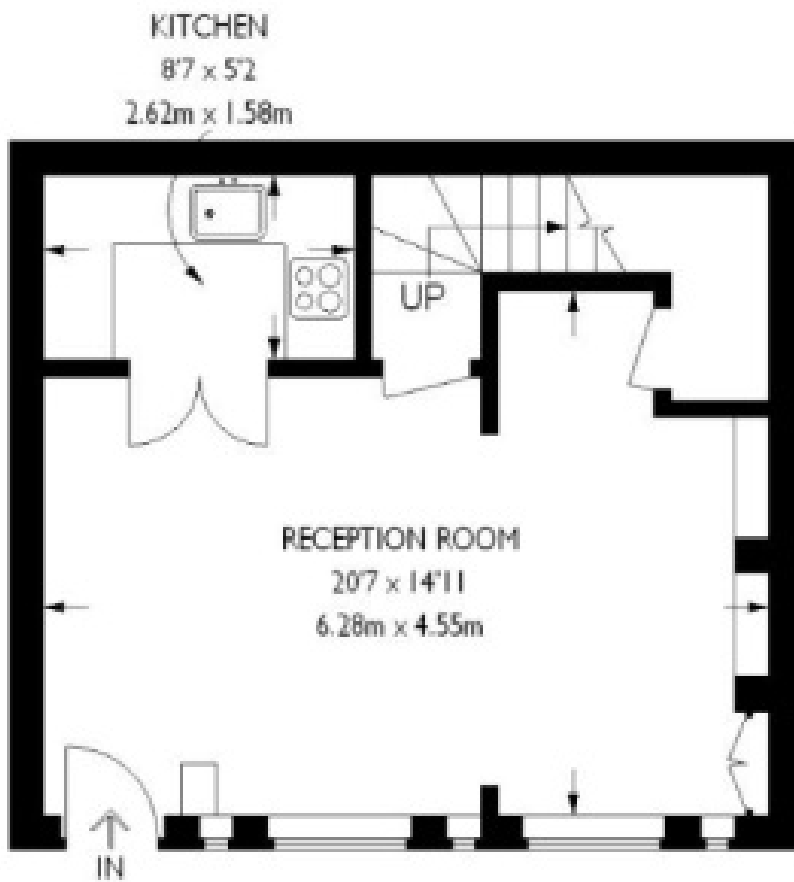
VAT Number 523 0666 68

Approximate Gross Internal Area
Ground Floor :- 377 sq ft / 35 sq m
First Floor :- 377 sq ft / 35 sq m
Total :- 753 sq ft / 70 sq m







First Floor



Ground Floor

| Energy Efficiency Rating | | | Environmental Impact (CO ₂) Rating | | |
|---|----------------------------|---|---|----------------------------|---|
| | Current | Potential | | Current | Potential |
| Very energy efficient - lower running costs | | | Very environmentally friendly - lower CO ₂ emissions | | |
| (92-100) A | | | (92-100) A | | |
| (81-91) B | | 88 | (81-91) B | | 87 |
| (69-80) C | | | (69-80) C | | |
| (55-68) D | 63 | | (55-68) D | 58 | |
| (39-54) E | | | (39-54) E | | |
| (21-38) F | | | (21-38) F | | |
| (1-20) G | | | (1-20) G | | |
| Not energy efficient - higher running costs | | | Not environmentally friendly - higher CO ₂ emissions | | |
| England & Wales | EU Directive 2002/91/EC |  | England & Wales | EU Directive 2002/91/EC |  |

The energy efficiency rating is a measure of the overall efficiency of a home. The higher the rating the more energy efficient the home is and the lower the fuel bills will be.

The environmental impact rating is a measure of a home's impact on the environment in terms of carbon dioxide (CO₂) emissions. The higher the rating the less impact it has on the environment.