

Wythburn Place, London. W1H

£1,200 pw | £5,200 pcm Subject To Contract (fees apply)



A unique and beautifully presented, contemporary mews house with solid hard wood floors throughout.

The house has been refurbished in a contemporary style with neutral décor, situated in a quiet cobbled mews, close to Marble Arch and Hyde Park.

Living room

Dining room

Kitchen

3 bedrooms

2 bathrooms

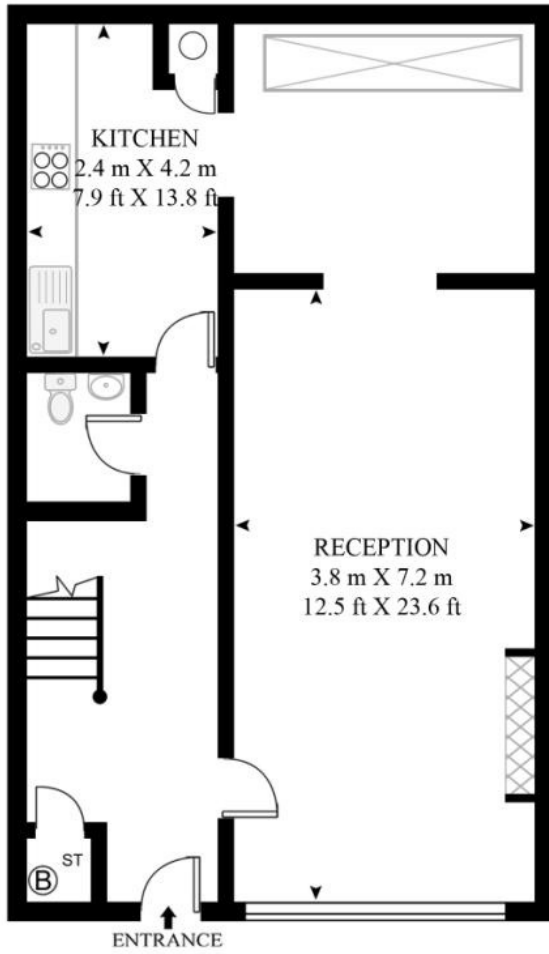
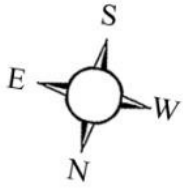
Guest cloakroom

Small decked terrace

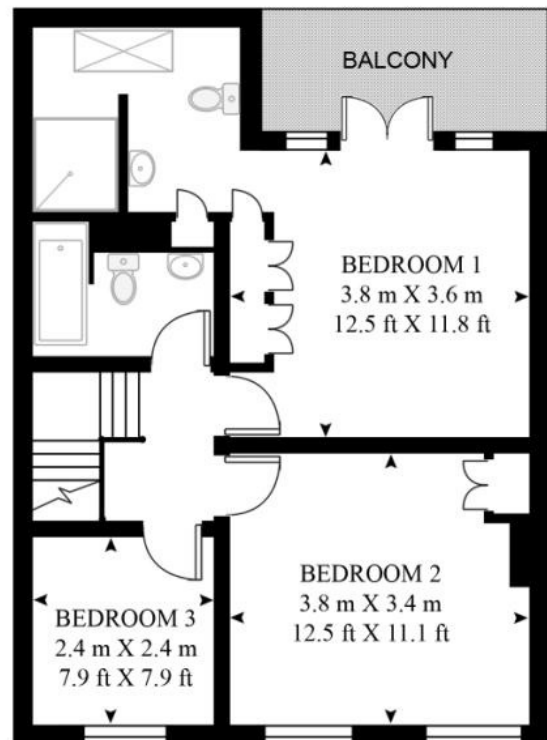
McGlashans Property Services
107 Crawford Street . London . W1H 2JA
TEL: 020 7486 6711 . E: lettings@mcglashans.co.uk

WYTHBURN PLACE

APPROXIMATE GROSS INTERNAL FLOOR AREA 1203 SQ.FT (111.8 SQ.M)



GROUND FLOOR





FIRST FLOOR



This floor plan has been defined by the RICS Code of Measurement. This floor plan and all others are for approximate representative purposes only and upon usage is agreed to as such by the client.

WWW: hdvirtualart.com | TEL: 0207 923 7300 | EMAIL: info@hdvirtualart.com

Energy Efficiency Rating			Environmental Impact (CO ₂) Rating		
	Current	Potential		Current	Potential
Very energy efficient - lower running costs			Very environmentally friendly - lower CO ₂ emissions		
(92-100) A			(92-100) A		
(81-91) B			(81-91) B		
(69-80) C		81	(69-80) C		76
(55-68) D	58		(55-68) D		
(39-54) E			(39-54) E	50	
(21-38) F			(21-38) F		
(1-20) G			(1-20) G		
Not energy efficient - higher running costs			Not environmentally friendly - higher CO ₂ emissions		
England & Wales	EU Directive 2002/91/EC		England & Wales	EU Directive 2002/91/EC	

The energy efficiency rating is a measure of the overall efficiency of a home. The higher the rating the more energy efficient the home is and the lower the fuel bills will be.

The environmental impact rating is a measure of a home's impact on the environment in terms of carbon dioxide (CO₂) emissions. The higher the rating the less impact it has on the environment.