

Upper Montagu Street, London. W1H

£745 pw | £3,228 pcm Subject To Contract (fees apply)



An attractive fully refurbished duplex flat on the raised ground and lower ground floors of a charming Grade II Listed Georgian house. The original period features of this beautiful home are enhanced with the contrast of the modern contemporary kitchen and bathrooms. The property also benefits from the rare added feature in Marylebone of 2 areas of private outside space.

Situated in a residential street close to Baker Street and Regents Park and within easy walking distance to the bustling cafes, shops and famous restaurants of Marylebone High Street.

Large living room open plan to dining room

2 bedrooms both with en suite bathrooms

Guest cloakroom

Private garden accessed from the kitchen leading down to pri

McGlashans Property Services
107 Crawford Street . London . W1H 2JA
TEL: 020 7486 6711 . E: lettings@mcglashans.co.uk

Upper Montagu Street, W1H

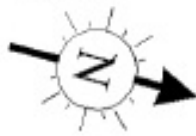
Approx. Gross Internal Area *

911 Ft² - 84.63 M²

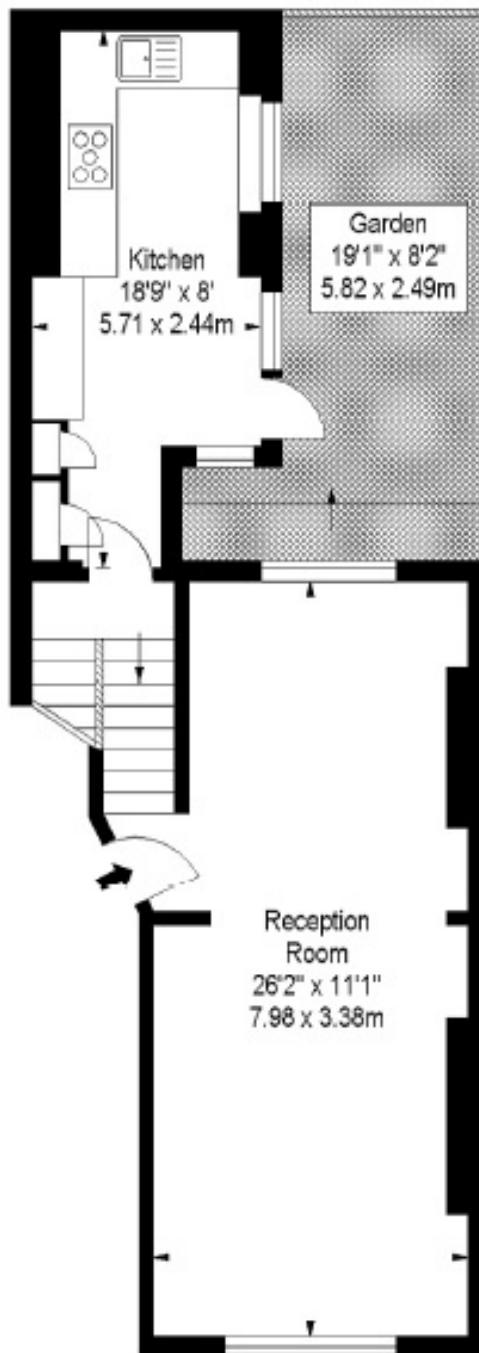
Store

Approx. Gross Internal Area *

75 Ft² - 96.97 M²



Lower Ground Floor



Ground Floor

Score	Energy rating	Current	Potential
92+	A		
81-91	B		
69-80	C	73 c	77 c
55-68	D		
39-54	E		
21-38	F		
1-20	G		