

Shillibeer Place, London. W1H

£1,100 pw | £4,767 pcm Subject To Contract (fees apply)



A lovely mews house in this quiet cul-de-sac. The house is situated over 3 floors and has impressive square footage of over 1,000 sq ft this is the perfect family home.

Located within easy walking distance of Baker Street and Marylebone High Street and all of the transport amenities of the Baker Street Tube and Marylebone Train Station.

Living room with dining area
open plan kitchen

Master bedroom floor with en
suite bathroom

2 further bedrooms

Family bathroom

Guest cloakroom

Private underground parking
(by separate negotiation)

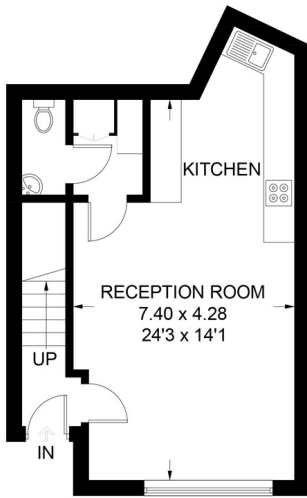
McGlashans Property Services
107-109 Crawford Street . London . W1H 2JA
TEL: 020 7486 6711 . E: lettings@mcglashans.co.uk

VAT Number 523 0666 68

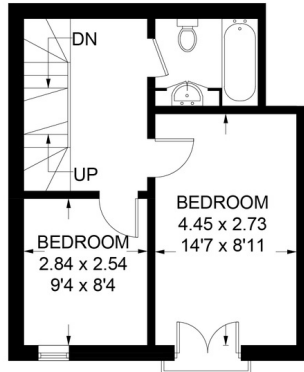
Fees and Charges TENANCY AGREEMENT: £180.00 INDIVIDUAL REFERENCE: £48.00 COMPANY REFERENCE: £48.00 ALL PRICES ARE INCLUSIVE OF VAT @ 20%

Shillibeer Place, London, W1H

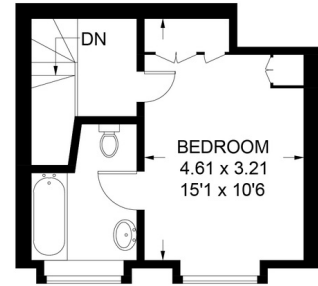
Approximate Gross Internal Area = 96.7 sq m / 1041 sq ft



GROUND FLOOR
39.8 sq m / 428 sq ft



FIRST FLOOR
32.5 sq m / 350 sq ft

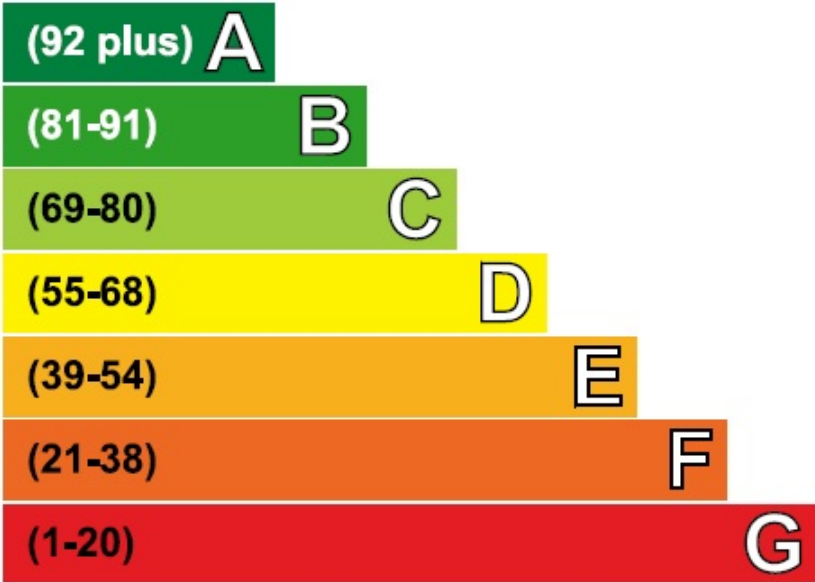


SECOND FLOOR
24.4 sq m / 263 sq ft

Illustration for identification purposes only, measurements are approximate, not to scale. (ID192811)

Energy Efficiency Rating

Very energy efficient - lower running costs



Not energy efficient - higher running costs

Current	Potential
69	86