

Marylebone High Street, London. W1U

£390 pw | £1,690 pcm Subject To Contract (fees apply)



A first floor studio flat in this ever popular and well maintained building on Marylebone High Street with its boutiques cafes and restaurants.

Highbourne House is well located for both Baker Street and Bond Street tube stations and Regents Park is a short walk away.

This studio flat is offered with heating and hot water costs included and it is situated at the rear of the building so is quiet.

Studio room

Kitchen

Bathroom

Lift

Day time caretaker

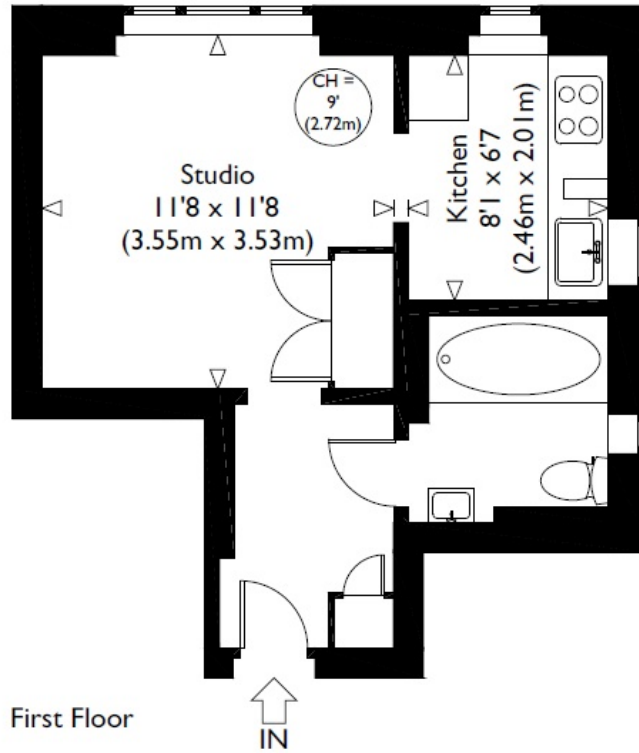
Heating and hot water included

McGlashans Property Services
107-109 Crawford Street . London . W1H 2JA
TEL: 020 7486 6711 . E: lettings@mcglashans.co.uk

VAT Number 523 0666 68

Fees and Charges TENANCY AGREEMENT: £180.00 INDIVIDUAL REFERENCE: £48.00 COMPANY REFERENCE: £48.00 ALL PRICES ARE INCLUSIVE OF VAT @ 20%

Highbourne House

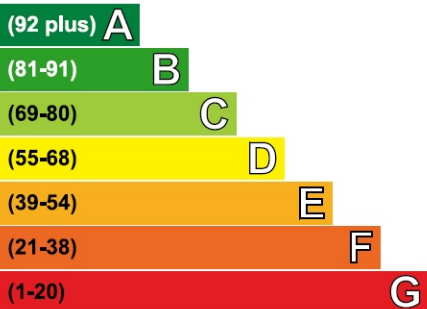


Approximate Gross Internal Floor Area : 287 sq ft / 26.7 sq m

Illustration for identification purposes only, measurements are approximate, not to scale.

Energy Efficiency Rating

Very energy efficient - lower running costs



Not energy efficient - higher running costs

Current	Potential
63	72

The graph shows the current energy efficiency of your home.

The higher the rating the lower your fuel bills are likely to be.

The potential rating shows the effect of undertaking the recommendations on page 3.

The average energy efficiency rating for a dwelling in England and Wales is band D (rating 60).

The EPC rating shown here is based on standard assumptions about occupancy and energy use and may not reflect how energy is consumed by individual occupants.