

Kings Gate Walk, London. SW1E

£1,050 pw | £4,550 pcm Subject To Contract (fees apply)



A stunning apartment in this modern development in the heart of Victoria.

This superb contemporary apartment is on the 7th floor and offers chic and stylish finishes, comfort cooling and under floor heating, with oak flooring to the reception and limestone tiling to the bathrooms.

The building offers every convenience including 24 hour concierge, underground parking, has excellent transport links with shops and restaurants on your doorstep.

It is in the close proximity to Belgravia and the Royal Parks.

Living room with open plan
kitchen

Master bedroom with en suite
bathroom

2nd double bedroom

2nd bathroom

Utility cupboard

Large balcony

Comfort cooling

24 concierge

Lifts

Underground parking

Kings Gate, Kings Gate Walk, SW1E

Approximate Gross Internal Area
985 sq ft / 91.51 sq m

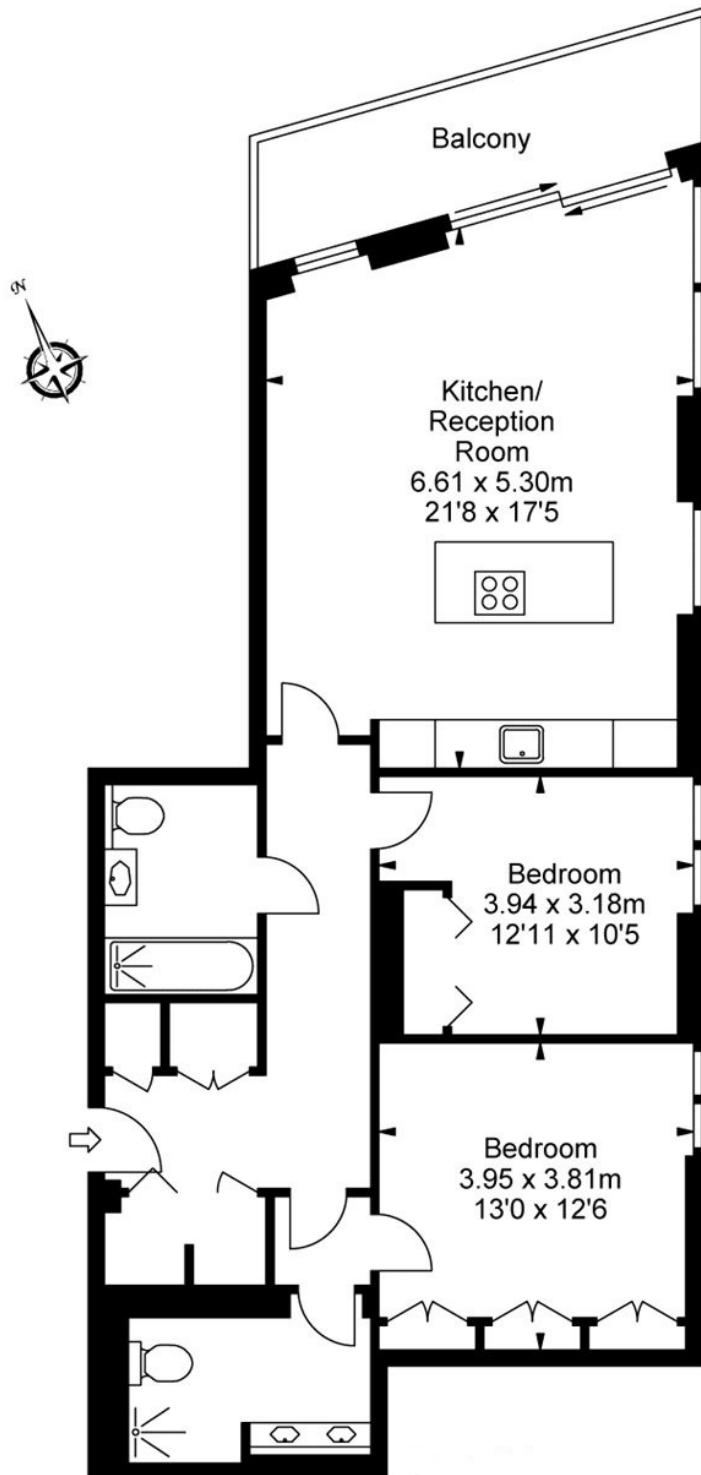



ILLUSTRATION FOR IDENTIFICATION PURPOSES ONLY

ALL MEASUREMENTS ARE MAXIMUM, AND INCLUDE WINDOW BAYS AND WARDROBES WHERE APPLICABLE
THIS PLAN MUST NOT BE REPRODUCED BY ANY OTHER PERSON WITHOUT PERMISSION

Energy Efficiency Rating

	Current	Potential
<i>Very energy efficient - lower running costs</i> (92-100) A		
(81-91) B	86	86
(69-80) C		
(55-68) D		
(39-54) E		
(21-38) F		
(1-20) G		
<i>Not energy efficient - higher running costs</i>		
England & Wales	EU Directive 2002/91/EC	

The energy efficiency rating is a measure of the overall efficiency of a home. The higher the rating the more energy efficient the home is and the lower the fuel bills will be.