

Chiltern Street, London. W1U

£825 pw | £3,575 pcm Subject To Contract (fees apply)



An extremely spacious flat situated on the lower ground floor of this delightful period block. Portman Mansions has 24 hour porter service and a residents gym (fees apply). Close to Baker Street station and within easy walking distance to Marylebone High Street and Regents Park.

Double reception

Kitchen

2 double bedrooms

Bathroom

Guest cloakroom

Study

Lift

24hr porter

Residents gym (fees apply)

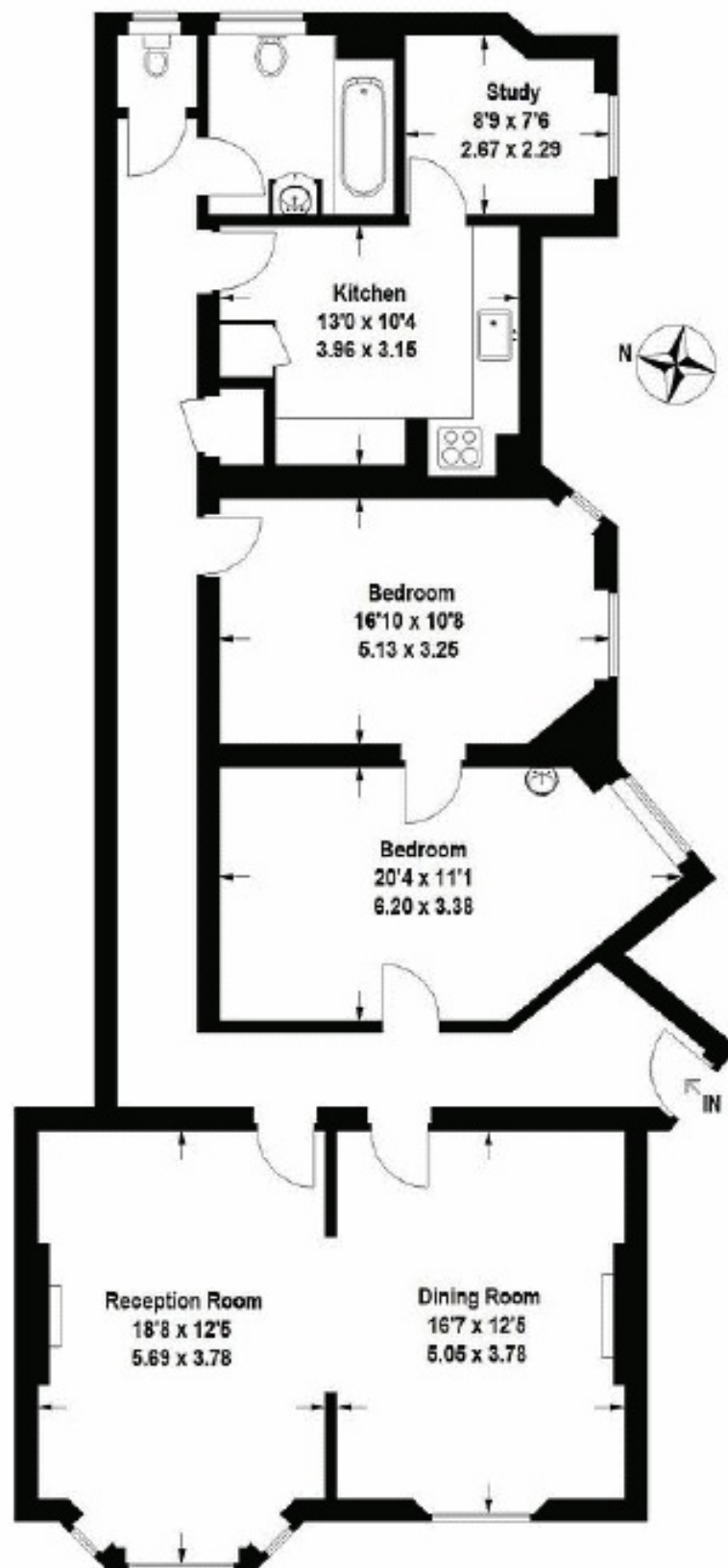
McGlashans Property Services
107-109 Crawford Street . London . W1H 2JA
TEL: 020 7486 6711 . E: lettings@mcglashans.co.uk

VAT Number 523 0666 68

Fees and Charges TENANCY AGREEMENT: £180.00 INDIVIDUAL REFERENCE: £48.00 COMPANY REFERENCE: £48.00 ALL PRICES ARE INCLUSIVE OF VAT @ 20%

Chiltern Street, W1

Approximate Gross Internal Area
130.8 sq m / 1408 sq ft



Lower Ground Floor

This plan is for layout guidance only. Not drawn to scale unless stated. Windows and door openings are approximate. Whilst every care is taken in the preparation of this plan, please check all dimensions, shapes and compass bearings before making any decisions reliant upon them. (ID 137149)