

Bryanston Square, London. W1H

£1,495 pw | £6,478 pcm Subject To Contract (fees apply)



A spacious first floor 3 bedroom lateral executive apartment in this sought after secure development with the benefits of a 24 hour concierge desk and underground parking (available by separate negotiation).

Ellerton House is situated on prestigious Bryanston Square a few minutes walk from the bustling shops and restaurants of Marylebone High Street and is close to Baker Street for excellent transport links with Hyde Park also being a short walk away.

Living/dining room

Eat-in kitchen

Utility room

3 double bedrooms all with en-suite bathrooms

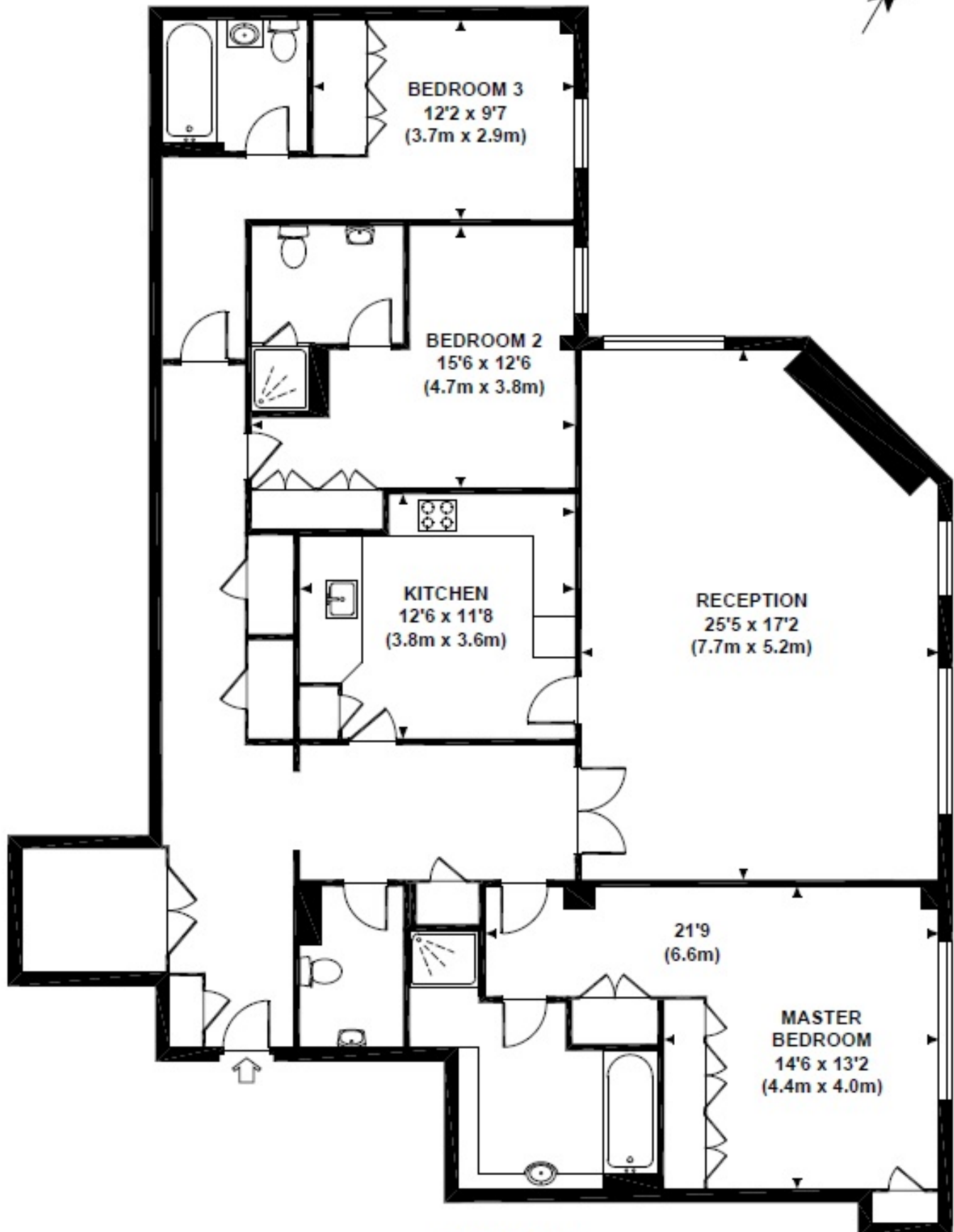
Guest cloakroom

24 hour porter

Use of private garden square
and underground parking (both
s



McGlashans Property Services
107 Crawford Street . London . W1H 2JA
TEL: 020 7486 6711 . E: lettings@mcglashans.co.uk

ELLERTON HOUSE
Approximate Gross Internal Area 1720 sq ft / 160 sq m



FIRST FLOOR
GROSS INTERNAL
FLOOR AREA 1720 SQ FT

Although every attempt has been made to ensure accuracy, all measurements are approximate.
The floor plan's for illustrative purposes only and not to scale. Measured in accordance to RICS standards.
DE-PHOTOGRAPHY.NET

Energy Efficiency Rating			Environmental Impact (CO ₂) Rating		
	Current	Potential		Current	Potential
Very energy efficient - lower running costs			Very environmentally friendly - lower CO ₂ emissions		
(92-100) A			(92-100) A		
(81-91) B			(81-91) B		
(69-80) C		70	(69-80) C		73
(55-68) D	54		(55-68) D	58	
(39-54) E			(39-54) E		
(21-38) F			(21-38) F		
(1-20) G			(1-20) G		
Not energy efficient - higher running costs			Not environmentally friendly - higher CO ₂ emissions		
England & Wales	EU Directive 2002/91/EC		England & Wales	EU Directive 2002/91/EC	

The energy efficiency rating is a measure of the overall efficiency of a home. The higher the rating the more energy efficient the home is and the lower the fuel bills will be.

The environmental impact rating is a measure of a home's impact on the environment in terms of carbon dioxide (CO₂) emissions. The higher the rating the less impact it has on the environment.