

Brompton Road, London. SW3

£1,100 pw | £4,767 pcm Subject To Contract (fees apply)



A super modern two bedroom apartment on the 7th floor of this purpose built block, offering views over Trevor Square and Knightsbridge from the main rooms. The flat has been recently refurbished and offers contemporary décor throughout.

Princes Court is situated on the Brompton Road directly opposite Harrods so is ideally located for all the amenities of Knightsbridge, Sloane Square and Hyde Park.

Living room with dining area

Kitchen

Master bedroom

Second double bedroom

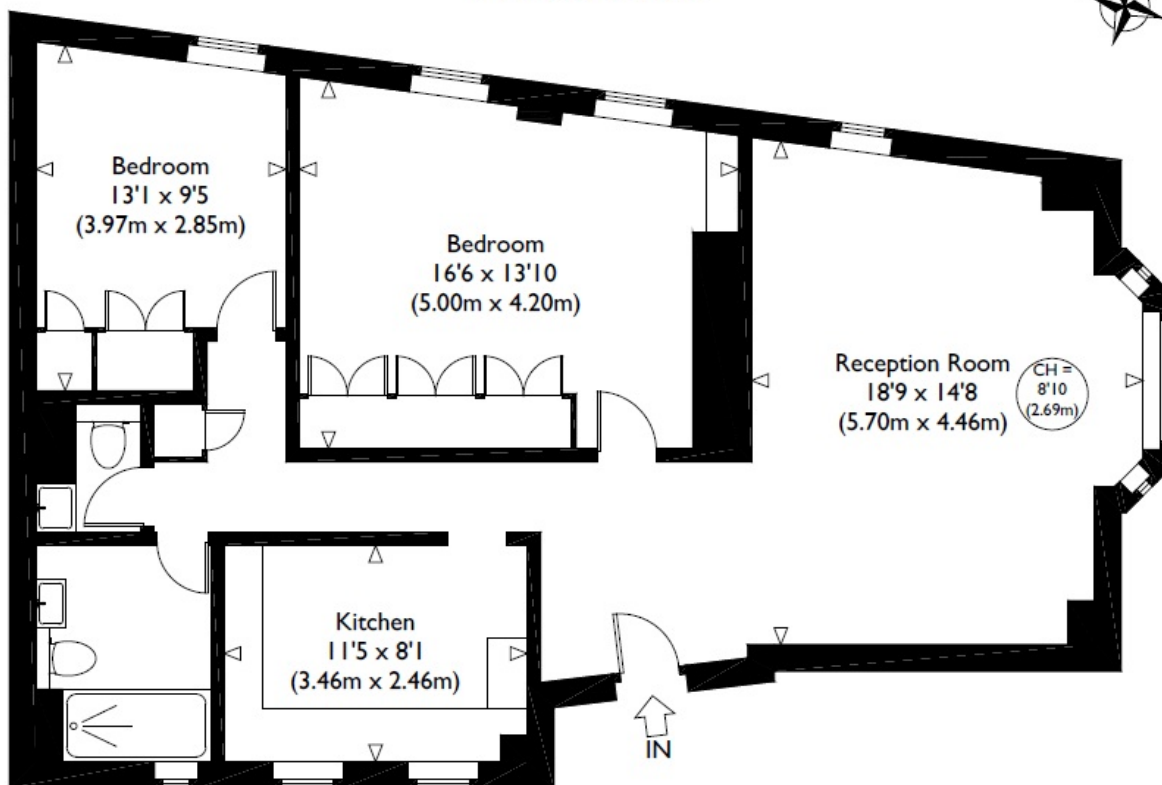
Bathroom

Guest cloakroom

Porters

Lifts

McGlashans Property Services
107 Crawford Street . London . W1H 2JA
TEL: 020 7486 6711 . E: lettings@mcglashans.co.uk



Seventh Floor

Approximate Gross Internal Floor Area : 887 sq ft / 82.4 sq m
Illustration for identification purposes only, measurements are approximate, not to scale.

Energy Efficiency Rating

Very energy efficient - lower running costs

(92 plus) **A**

(81-91) **B**

(69-80) **C**

(55-68) **D**

(39-54) **E**

(21-38) **F**

(1-20) **G**

Not energy efficient - higher running costs

Current	Potential
65	77